



OXFORD  
GARDENS  
INGLEBURN



ARTIST'S IMPRESSION

LOT 4



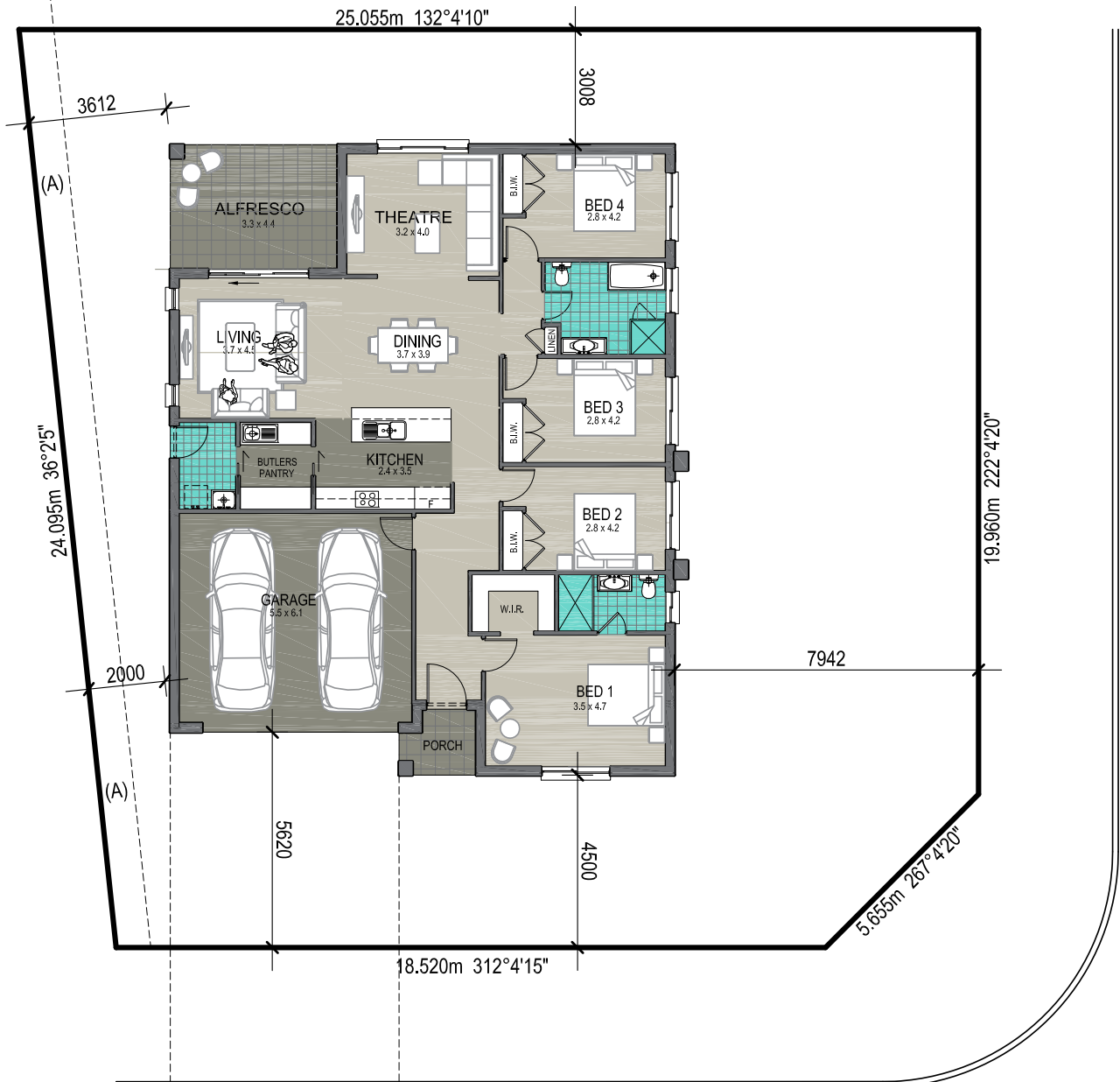
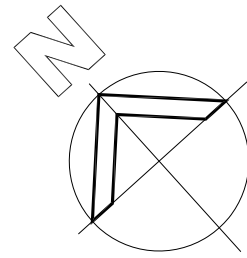
## HOME INCLUSIONS

- Fixed site costs including H1-Class slab\*
- Coloured concrete driveway
- Tiled alfresco area
- Tiles or timber look flooring to all living areas  
Your choice!
- Carpet to all bedrooms
- Designer kitchen
- Stone kitchen bench top
- Stainless steel appliances
- Main walk-in-robe
- Built-in-robos to the remaining bedrooms
- Feature Macarthur Facade
- Floating style vanity cupboard
- LED Downlights
- Pendant lights to kitchen benchtop
- Flyscreens to openable windows
- Landscaping, clothesline, Masonry Letterbox
- Kikuyu turf to front, side and rear
- Colorbond fencing
- Air Conditioning



SPACIOUS *NEW* BEGINNINGS

# SEAFORTH 4.1 WITH MACARTHUR FAÇADE



\*Conditions: Images may depict landscaping & decorator items which are not supplied by New Living Homes & are not included in the price. Site costs may vary according to site classification, survey & site inspection, site conditions including rock and fill subject to building setback. Separate legal contracts may apply to the "Home and Land" components. New Living Homes is only responsible for the contract relating to the construction of the building. Prices subject to registered land. Prices subject to Statutory Consenting Authority approval and specified conditions, bushfire requirements and acoustic report. Inclusions based on New Living Homes Inclusions unless otherwise specified. New Living Homes reserves the right to revise plans, specifications and pricing without notice. Please contact a Sales Consultant for more information. All plans are subject to copyright protection.  
New Living Homes Pty Ltd - BLIC 244889 ABN 67152611713 26/11/19